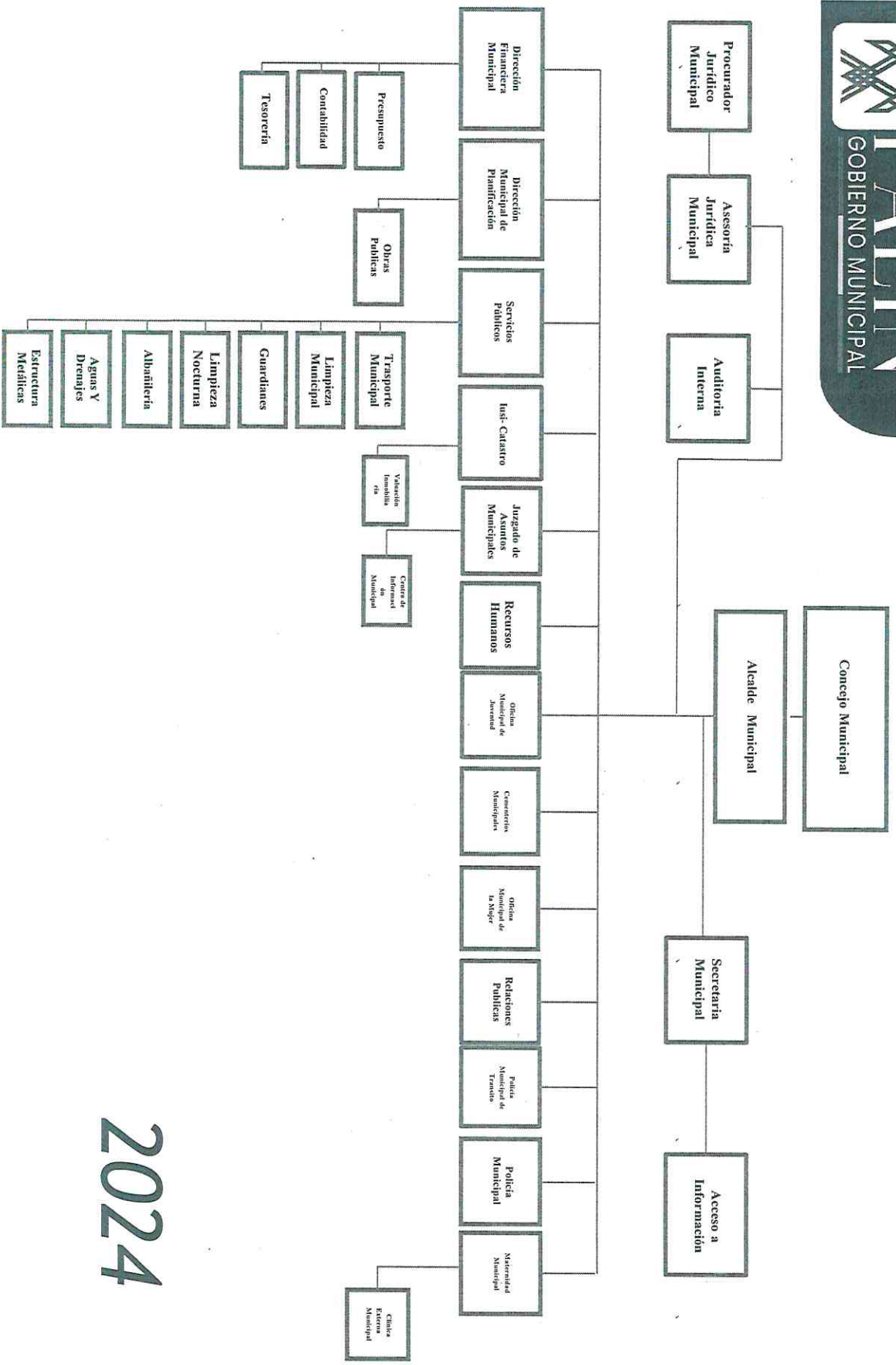


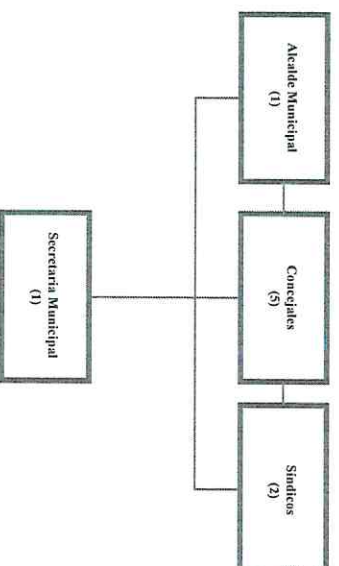
MUNICIPALIDAD DE PALIN



2024



MUNICIPALIDAD DE PALÍN

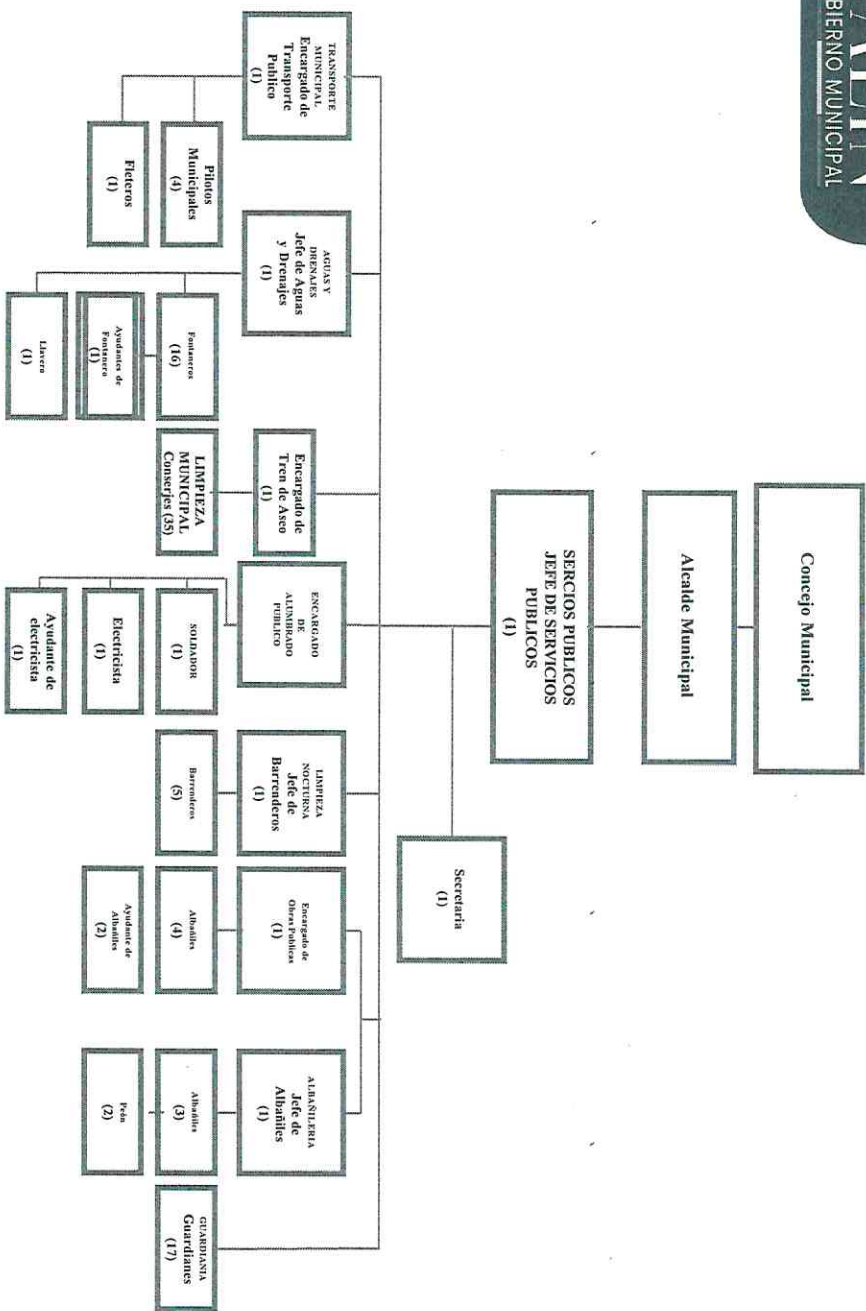


CONCEJO MUNICIPAL 2024

GOBIERNO MUNICIPAL PALÍN
Avenida Central 2-31, Zona 1, Palín Escuintla, Guatemala, C.A. // Tel: 7956-8888



MUNICIPALIDAD DE PALÍN

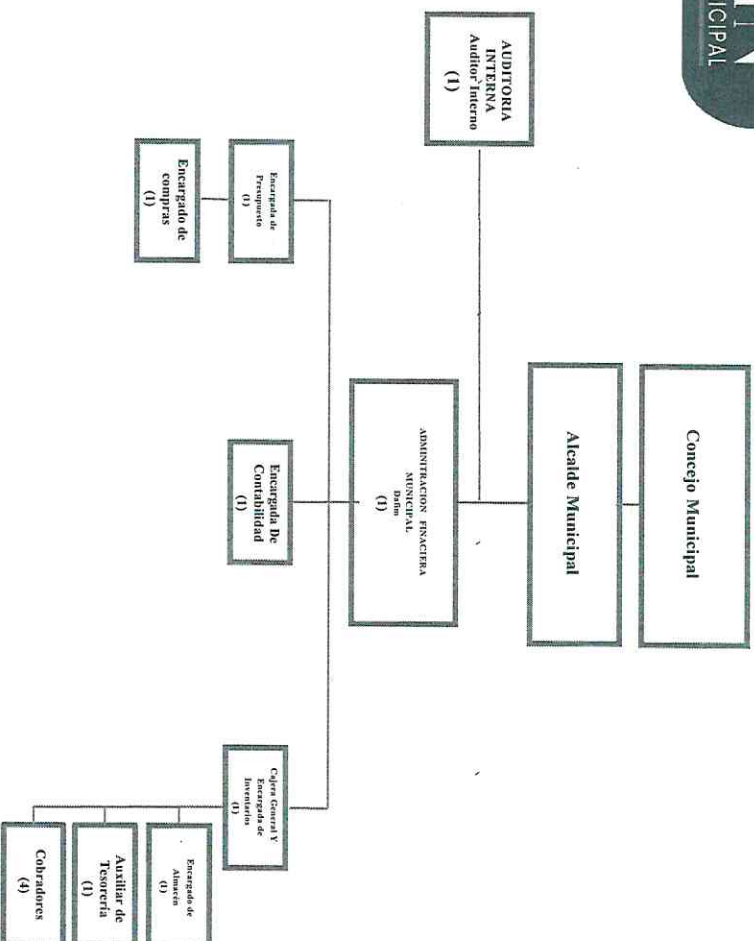


DEPTO. DE SERVICIOS PUBLICOS

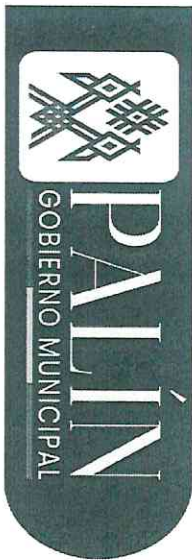
2024



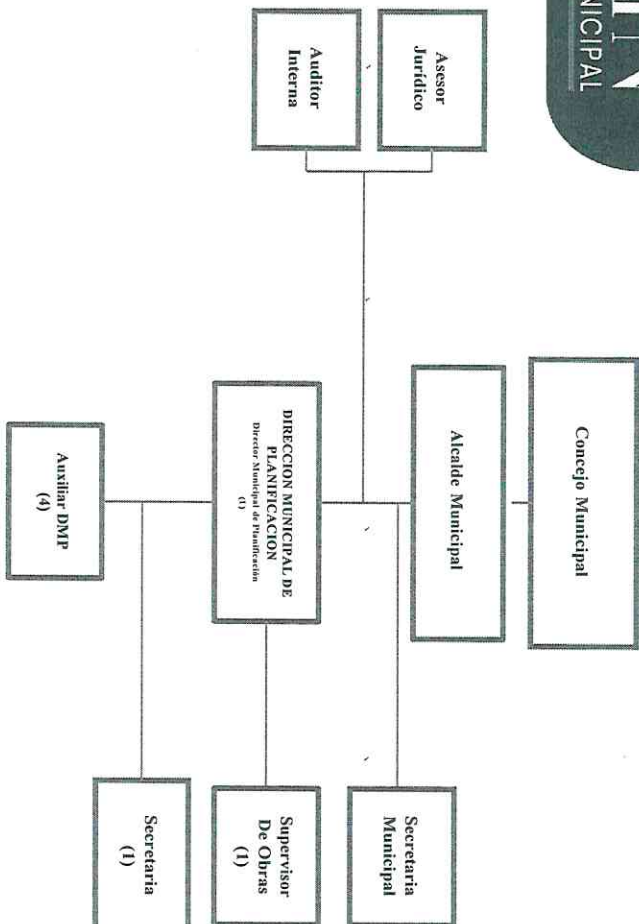
MUNICIPALIDAD DE PALÍN



DIRECCION FINANCIERA MUNICIPAL 2024



MUNICIPALIDAD DE PALIN

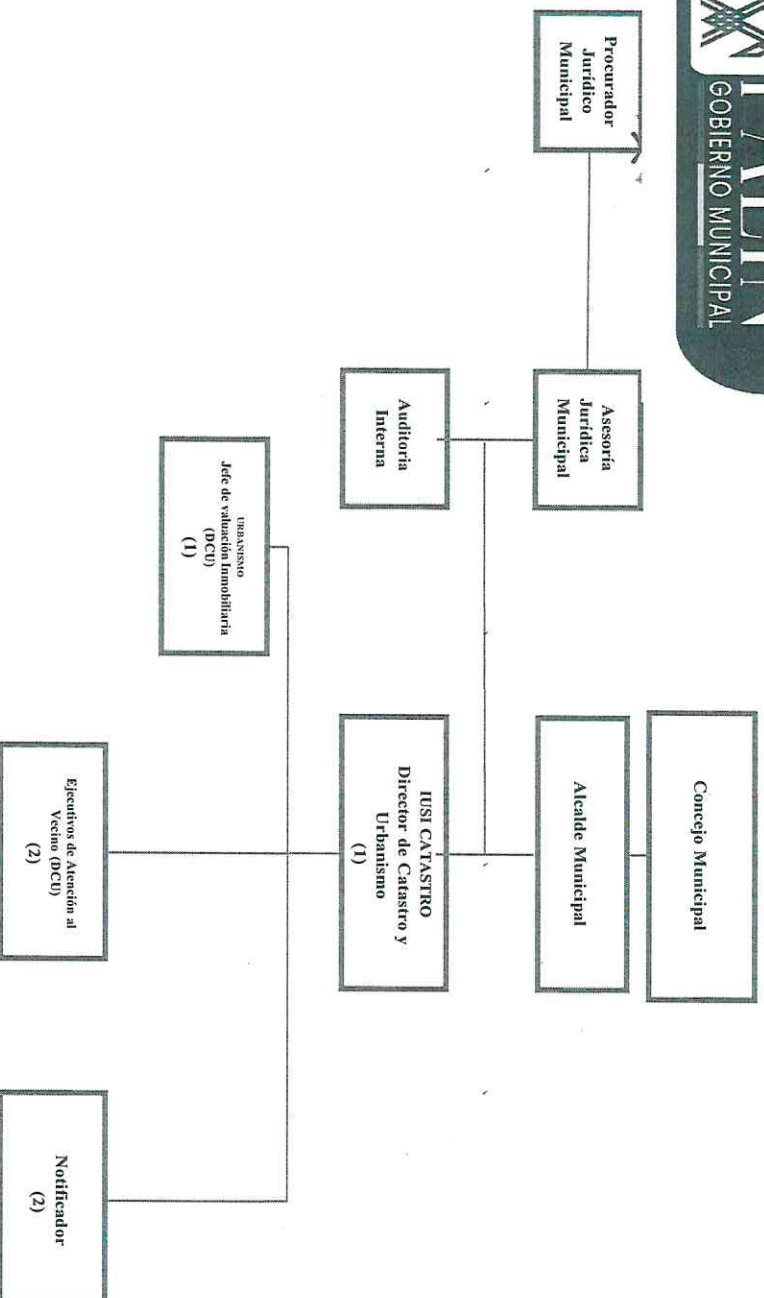


DIRECCION MUNICIPAL DE PLANIFICACION

2024

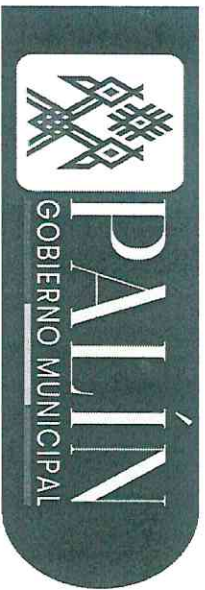


MUNICIPALIDAD DE PALÍN

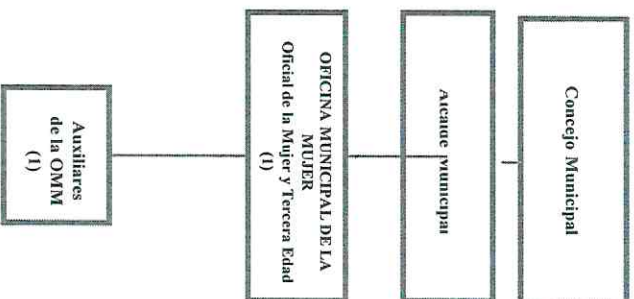


DEPTO. IUSI CATASTRO

2024



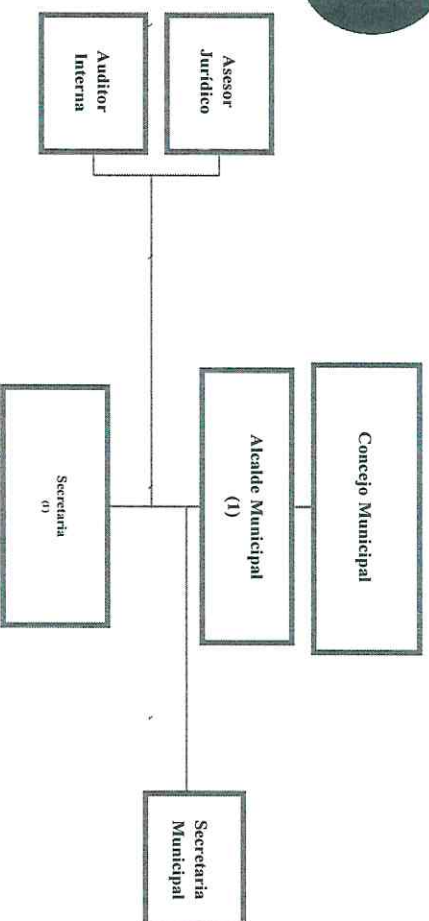
MUNICIPALIDAD DE PALIN



OFICINA MUNICIPAL DE LA MUJER 2024



MUNICIPALIDAD DE PALIN

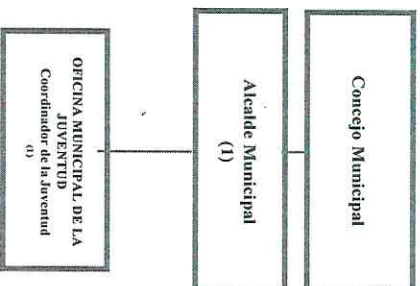


ALCALDIA MUNICIPAL

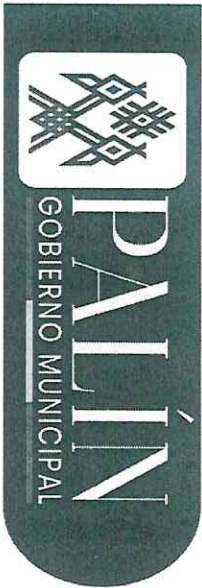
2024



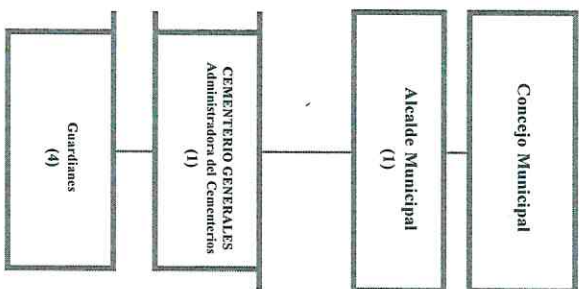
MUNICIPALIDAD DE PALIN



OFICINA MUNICIPAL DE LA JUVENTUD 2024



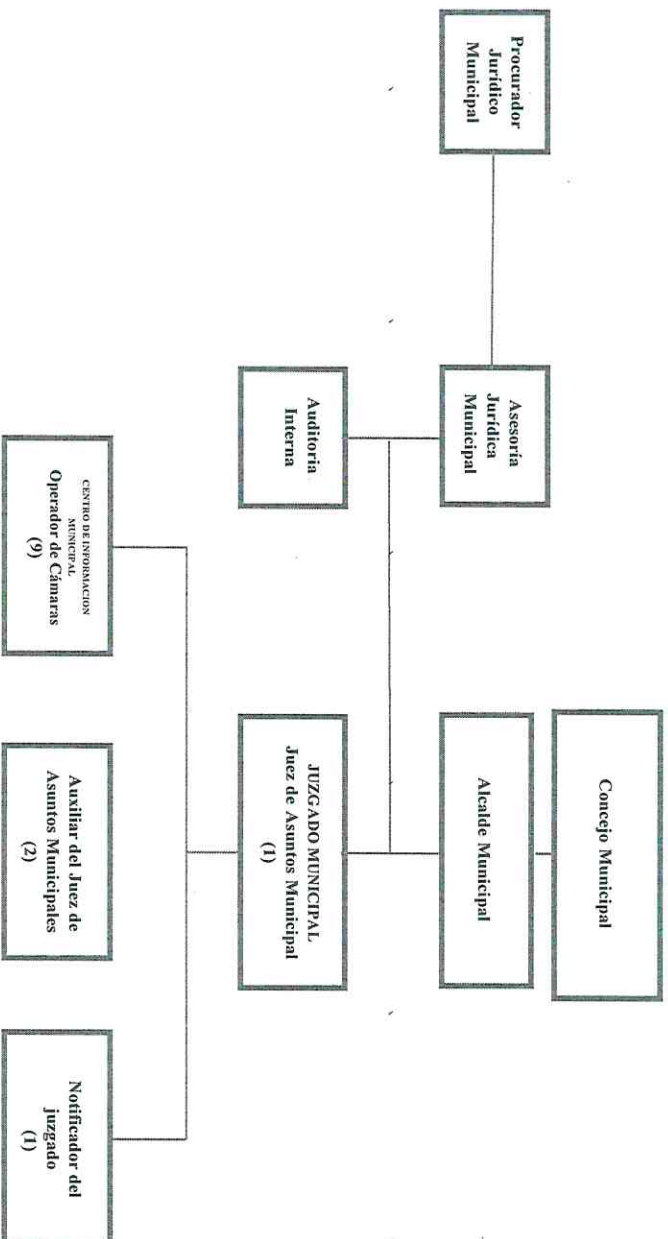
MUNICIPALIDAD DE PALÍN



CEMENTERIO GENERAL

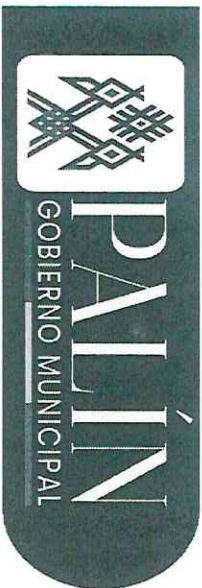
2024

MUNICIPALIDAD DE PALIN

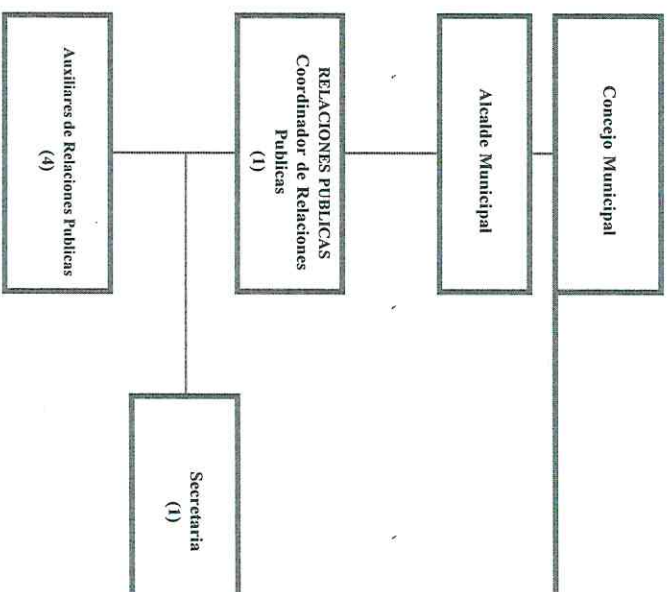


JUZGADO MUNICIPAL

2024



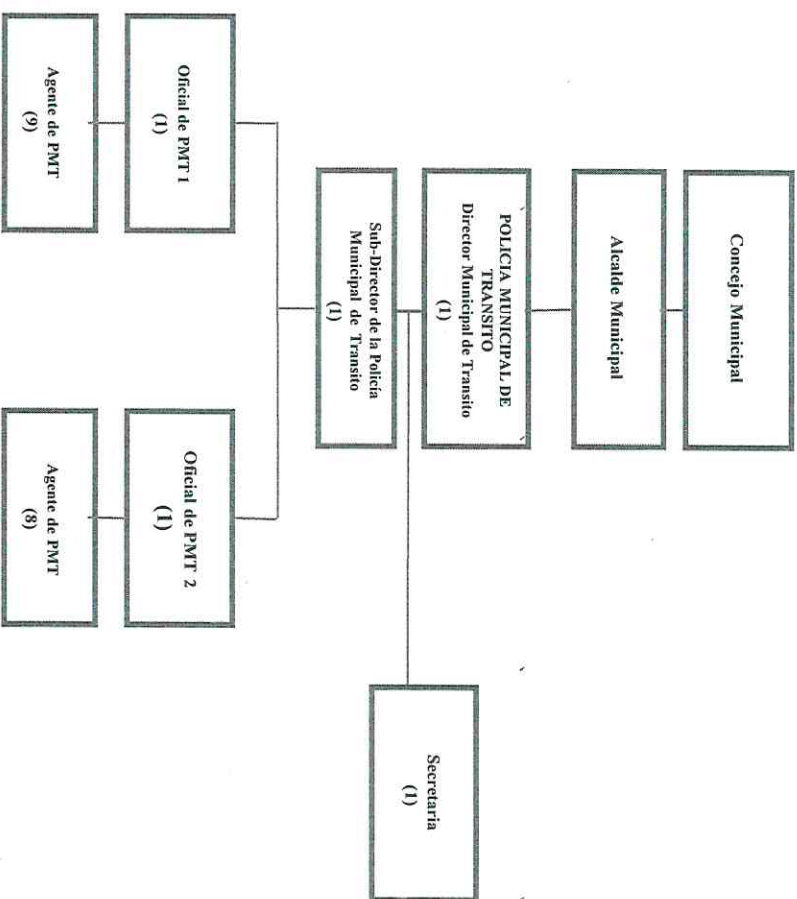
MUNICIPALIDAD DE PALIN



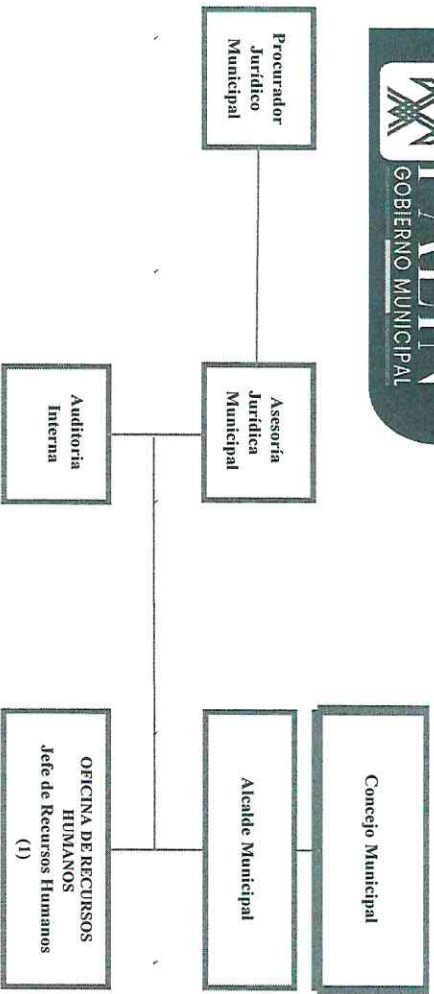
DEPTO. RELACIONES PUBLICAS 2024



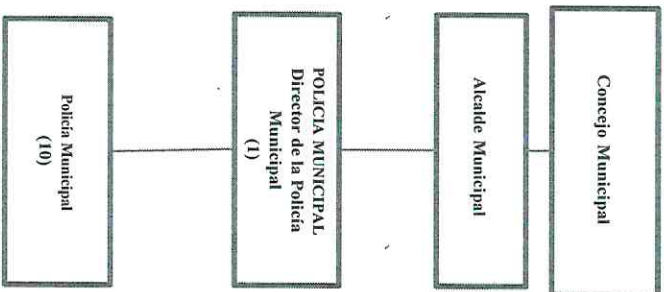
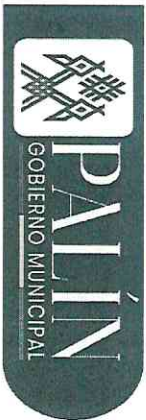
MUNICIPALIDAD DE PALIN



POLICIA MUNICIPAL DE TRÁNSITO 2024

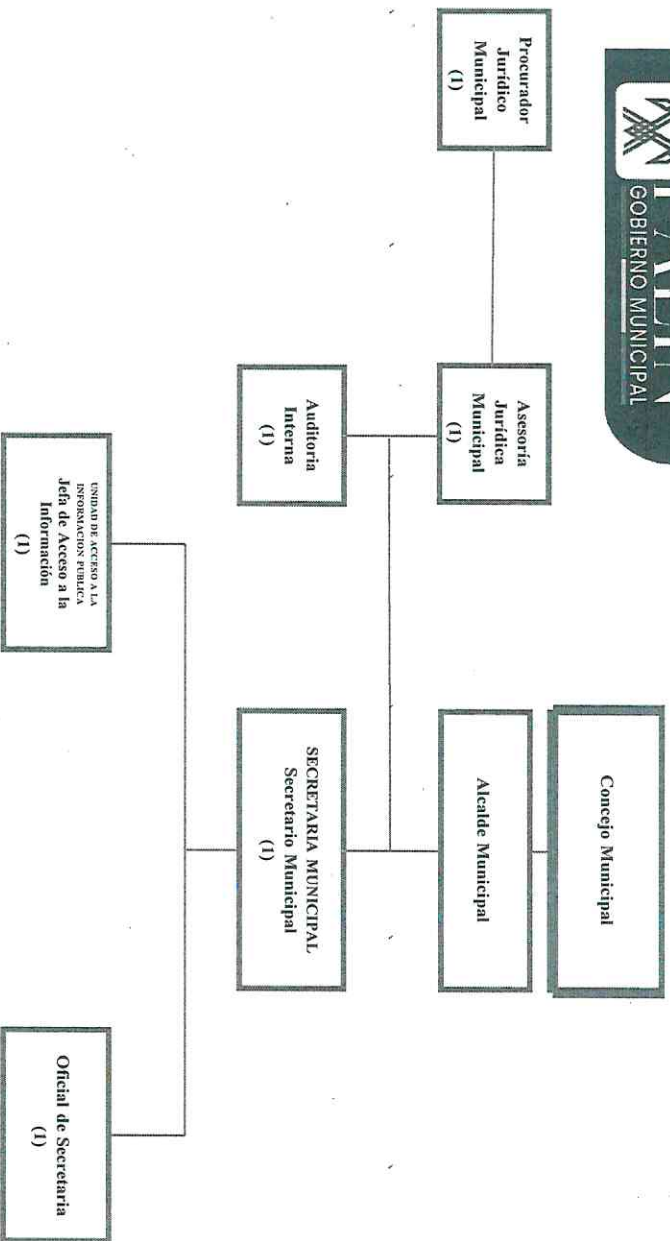


OFICINA DE RECURSOS HUMANOS 2024



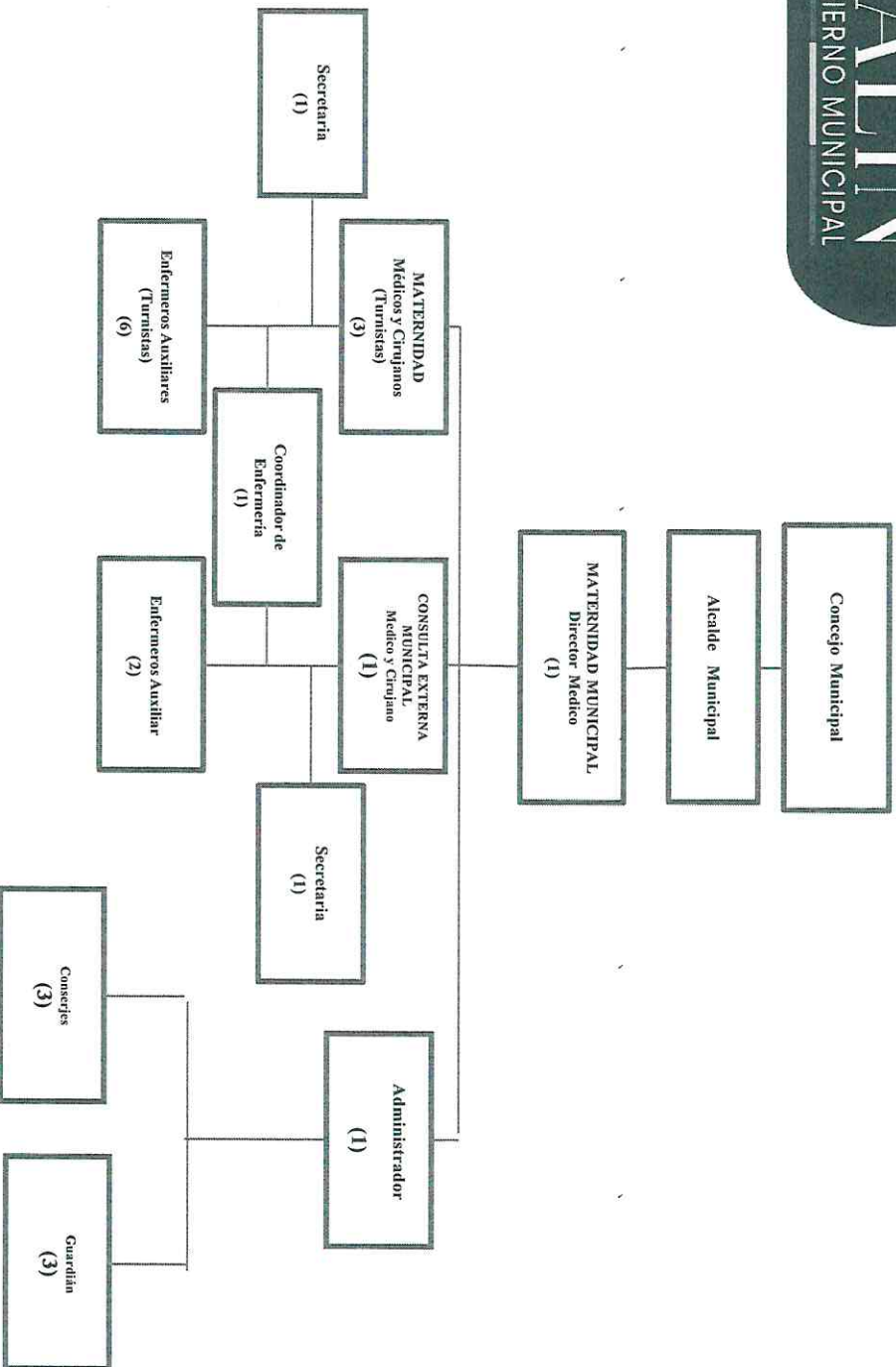
POLICIA MUNICIPAL

2024



SECRETARIA MUNICIPAL

2024



MATERNIDAD MUNICIPAL 2024